

CALENDAR

Together we build our flourishing future

2018



ISLA KENYA

Initiative for Sustainable Landscapes Kenya is an inclusive program that aims to improve people's lives and conserve the South West Mau Forest. It is driven by IDH, The Sustainable Trade Initiative, Community Forest Associations, Water Resource User Associations, Kenya Forest Service, County Governments, companies and NGOs. Together we find ways to live prosperously and sustainably. That means we are protecting the Mau forest because the Mau is the source of our prosperity and life. People living around the forest can benefit from trainings and other activities organized by ISLA.

Trainings include:

- Learning how to rear livestock in a way that produces more milk, meat and cash for our families
- Producing honey
- Growing food more productively
- Learning methods for conserving our forest and water sources, so we don't suffer from droughts
- Using cooking methods that are cheaper and use less wood from the forest
- Learning how to make money by setting up businesses that do not lead to forest destruction

To know more about the ISLA program or to get involved, please contact your local Community Forest Association, Water Resource User Association or Kenya Forest Service.



Do you want trainings in your school?
Contact Rhino Ark or your local Community
Forest Association!

JANUARY 2018

week	MONDAY	TUESDAY	WEDNESDAY	THURSDAY	FRIDAY	SATURDAY	SUNDAY
1	1	2	3	4	5	6	7
	New Year's Day						
2	8	9	10	11	12	13	14
3	15	16	17	18	19	20	21
4	22	23	24	25	26	27	28
5	29	30	31	1	2	3	4
6	5	6	7	8	9	10	11



We can help you learn how to get more milk and meat from your cows at home. Contact your local Community Forest Association or SNV and join the training.

FEBRUARY 2018

week	MONDAY	TUESDAY	WEDNESDAY	THURSDAY	FRIDAY	SATURDAY	SUNDAY
5	29	30	31	1	2	3	4
6	5	6	7	8	9	10	11
7	12	13	14	15	16	17	18
8	19	20	21	22	23	24	25
9	26	27	28	1	2	3	4
10	5	6	7	8	9	10	11



Our wildlife is the pride of our nation.
Let's protect it.

MARCH 2018

week	MONDAY	TUESDAY	WEDNESDAY	THURSDAY	FRIDAY	SATURDAY	SUNDAY
9	26	27	28	1	2	3 World Wildlife Day	4
10	5	6	7	8	9	10	11
11	12	13	14	15	16	17	18
12	19	20	21	22	23	24	25
13	26	27	28	29	30 Good Friday	31	1
14	2	3	4	5	6	7	8



Put your hope
on the plant you
have planted.



Join the movement and plant trees. Contact your
Community Forest Association for seedlings.

APRIL 2018

week	MONDAY	TUESDAY	WEDNESDAY	THURSDAY	FRIDAY	SATURDAY	SUNDAY
13	26	27	28	29	30	31	1
14	2	3	4	5	6	7	8
	Easter Monday						
15	9	10	11	12	13	14	15
16	16	17	18	19	20	21	22
17	23	24	25	26	27	28	29
18	30	1	2	3	4	5	6



MAY 2018

week	MONDAY	TUESDAY	WEDNESDAY	THURSDAY	FRIDAY	SATURDAY	SUNDAY
18	30	1	2	3	4	5	6
			Labour Day				
19	7	8	9	10	11	12	13
			Endangered Species Day				
20	14	15	16	17	18	19	20
21	21	22	23	24	25	26	27
22	28	29	30	31	1	2	3
23	4	5	6	7	8	9	10



JUNE 2018

week	MONDAY	TUESDAY	WEDNESDAY	THURSDAY	FRIDAY	SATURDAY	SUNDAY
22	28	29	30	31	1 Madaraka Day	2	3
23	4	5	6	7	8	9	10
24	11	12	13	14	15 Eid al Fitr	16	17
25	18	19	20	21	22	23	24
26	25	26	27	28	29	30	1
27	2	3	4	5	6	7	8



Water is the source
of life and the
Mau is the source of
our water.



Trees prevent springs from drying up. Contact your Water Resource Management Authority or GIZ to help plant trees near springs.

JULY 2018

week	MONDAY	TUESDAY	WEDNESDAY	THURSDAY	FRIDAY	SATURDAY	SUNDAY
26	25	26	27	28	29	30	1
27	2	3	4	5	6	7	8
28	9	10	11	12	13	14	15
29	16	17	18	19	20	21	22
30	23	24	25	26	27	28	29
31	30	31	1	2	3	4	5



Mau Forest
is our home. It is one
of Africa’s biggest
and most beautiful
forests.

AUGUST 2018

week	MONDAY	TUESDAY	WEDNESDAY	THURSDAY	FRIDAY	SATURDAY	SUNDAY
31	30	31	1	2	3	4	5
32	6	7	8	9	10	11	12
33	13	14	15	16	17	18	19
34	20	21	22	23	24	25	26
35	27	28	29	30	31	1	2
36	3	4	5	6	7	8	9



SEPTEMBER 2018

week	MONDAY	TUESDAY	WEDNESDAY	THURSDAY	FRIDAY	SATURDAY	SUNDAY
35	27	28	29	30	31	1	2
36	3	4	5	6	7	8	9
37	10	11	12	13	14	15	16
38	17	18	19	20	1	22	23
39	24	25	26	27	28	29	30
40	1	2	3	4	5	6	7



Contact Rhino Ark or your local Community Forest Association for bee-keeping trainings!

OCTOBER 2018

week	MONDAY	TUESDAY	WEDNESDAY	THURSDAY	FRIDAY	SATURDAY	SUNDAY
40	1	2	3	4	5	6	7
41	8	9	10	11	12	13	14
42	15	16	17	18	9	20	21
43	22	23	24	25	26	27	28
44	29	30	31	1	2	3	4
45	5	6	7	8	9	10	11



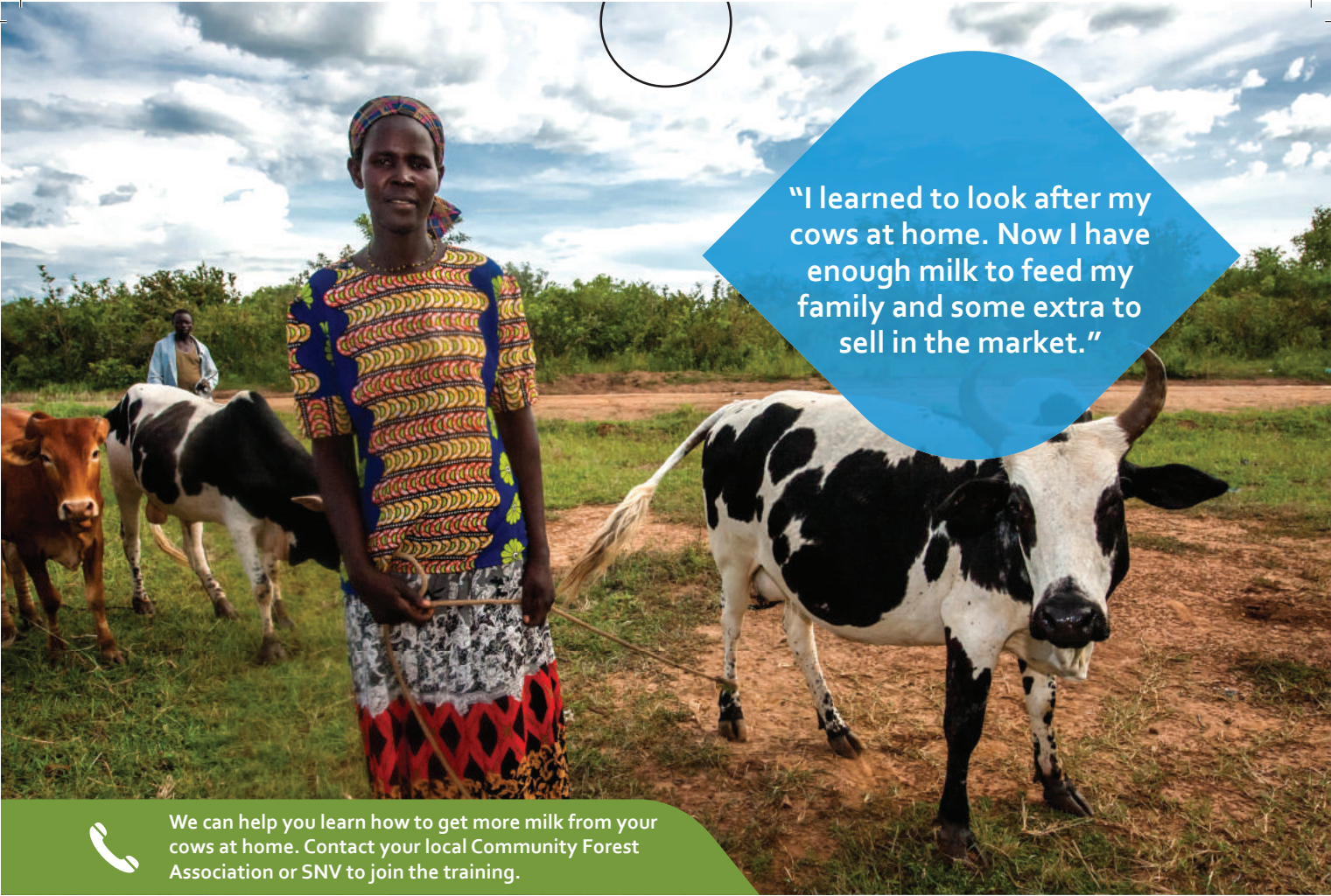
“If you want to go fast, go alone. If you want to go far, go together.”



Join the action. Contact your local community group.
Conserve the Mau.

NOVEMBER 2018

week	MONDAY	TUESDAY	WEDNESDAY	THURSDAY	FRIDAY	SATURDAY	SUNDAY
44	29	30	31	1	2	3	4
45	5	6	7	8	9	10	11
46	12	13	14	15	16	17	18
47	19	20	21	22	23	24	25
48	26	27	28	29	30	1	2
49	3	4	5	6	7	8	9



“I learned to look after my cows at home. Now I have enough milk to feed my family and some extra to sell in the market.”



We can help you learn how to get more milk from your cows at home. Contact your local Community Forest Association or SNV to join the training.

DECEMBER 2018

week	MONDAY	TUESDAY	WEDNESDAY	THURSDAY	FRIDAY	SATURDAY	SUNDAY
48	26	27	28	29	30	1	2
49	3	4	5	6	7	8	9
50	10	11	12	13	14	15	16
			Jamhuri Day				
51	17	18	19	20	21	22	23
52	24	25	26	27	28	29	30
		Christmas Day	Boxing Day				
1	31	1	2	3	4	5	6
		New Year's Day					

PROGRAM PARTNERS

Community Groups

Community Forest Associations
Water Resource Users Associations
Ogiek Council of Elders

Local governments

Kericho County
Bomet County
Nakuru County

Companies

Unilever
James Finlay (K) Ltd
Kenya Tea Development Agency
Safaricom Foundation
KENGEN
Timber Manufacturers Association

National government agencies

Kenya Forest Service
Kenya Wildlife Service
Water Resources Management Authority
Nyayo Tea Zones Development
Kenya Water Towers Agency

Ministries

Ministry of Environment and Natural Resources
Ministry Water and Irrigation

International partners

IDH
GIZ
Rhino Ark
CIFOR
Netherlands Ministry of Foreign Affairs



Together we build our
flourishing future.