

PRODUCTION, PROTECTION, INCLUSION (PPI)

A holistic approach to sustainability



IDH's PPI approach brings together companies, governments, farmers, communities and civil society in a jurisdiction to build sustainable governance models that can help protect forests, ensure sustainable production and improve community livelihoods.

RISKS THAT ARISE FROM DEFORESTATION



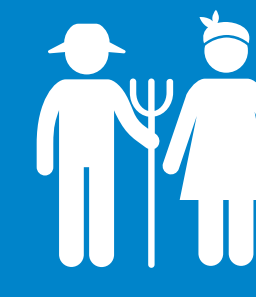
ENVIRONMENTAL

Risks to biodiversity, soil, water, climate



ECONOMIC

Risks to agricultural productivity and stable supply chains



SOCIAL

Risks to community livelihoods and social conflict

THE SOLUTION

IDH offers an integrated approach, using four complementary processes:



MULTI-STAKEHOLDER COALITION

Companies, government, farmers, communities and civil society work together to identify the desirable future for the jurisdiction



GREEN GROWTH PLAN (government)

Jurisdictional-level vision for sustainable economic development



PPI COMPACT (multi-stakeholder)

Agreement on sustainable production, forest protection & restoration, and livelihoods



VERIFIED SOURCING AREA (market)

Area that ensures sustainable supply for local and international markets



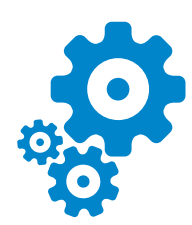
**Protection & Restoration
of forests**

**Safe operating space
that attracts investors**



**Inclusion
enhancing livelihoods**

contributes to



**Sustainable Production
of agro-commodities**

contributes to

WE USE THE PPI APPROACH IN 12 LANDSCAPES ACROSS 8 DIFFERENT COUNTRIES

We focus on commodities that have the highest environmental impacts – especially on forests, including:



Soy



Palm oil



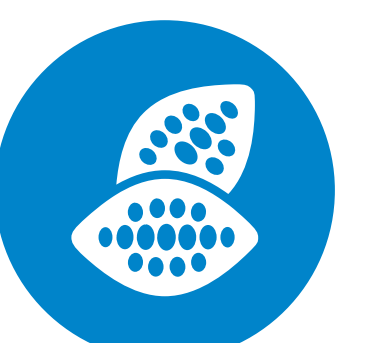
Beef



Timber



Tea



Cocoa

SUSTAINABLE DEVELOPMENT GOALS

