

The National Initiatives on Sustainable Cocoa in Europe

2022 working groups, task forces & learning events



The National Initiatives on Sustainable Cocoa in Europe (ISCOs) are glad to announce further advancements in the alignment and coordination of their working groups and learning events. The ISCOs have created five workstreams, reflecting the common challenges identified in their Memorandum of Understanding: traceability & transparency, living income, forests & agroforestry, child labour, and monitoring & evaluation.

For each work stream a **working group** is or will be created which will foster peer learnings and support members in reaching their commitments. These ISCO working groups are an important addition (and in some cases replacement) to national working groups and fora.

Within a working group, several **task forces** can be created. These are small groups of dedicated experts with a high level of expertise that work on a specific time-bound task. The creation of task forces will be decided within the working groups. The ISCOs will also organize at least two **learning events** per year. Input will be provided by the working groups.

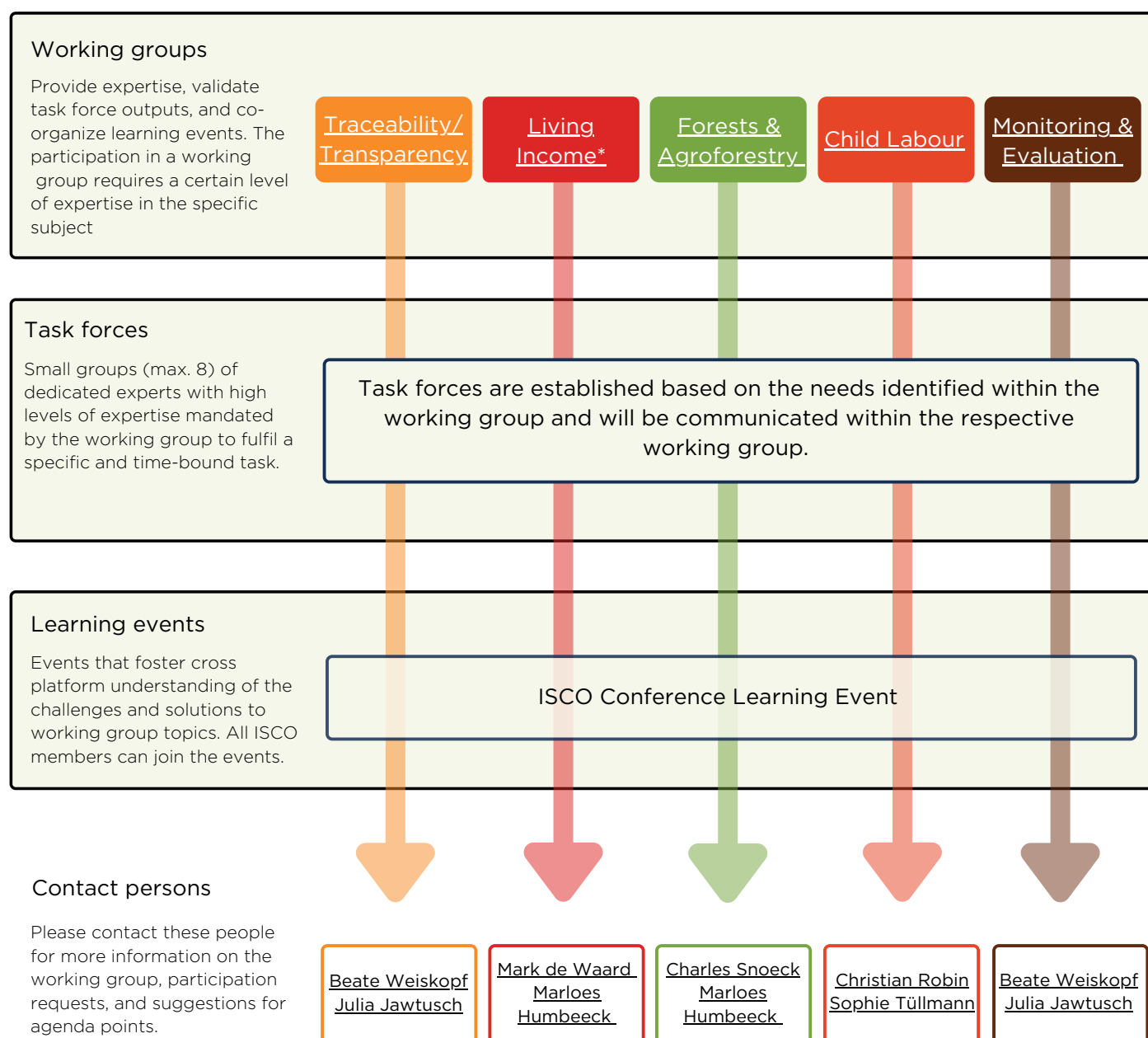
In this document, you will find more information on the five workstreams, **helping you as a member establish how you can contribute to the joint ISCO efforts**. You will also find a joint calendar with the planned 2022 working groups. In case of questions on a specific working group, please reach out to the respective contact persons, as indicated below.

Overview

Find out more about each working group's outcomes and goals by clicking on the working group of interest in the below visual. You will be directed to the draft Terms of Reference of the working group.

Please note the Terms of Reference will be finalized during the first working group meeting after being validated by the ISCO boards and steering committees.

In case of questions, please send a mail to the contact persons for the working group in question by clicking their name in the visual below.



*The ISCO Working Group on Living Income is currently under construction. More information will be shared in the run of 2022.

Working group composition

Each working group shall consist of a balanced representation of members from the four platforms and stakeholder groups. All interested members with a certain level of expertise on the topic of the WG are welcome to join. Experts from producing countries will be actively invited to participate. The ISCO WGs shall be co-led by two members with acknowledged expertise. If you are interested in becoming such a WG leader, please find [here](#) the Terms of Reference with an overview of responsibilities.

Task force composition

Task forces will be created when the need for one is identified within a WG. Interested WG members will be given the chance to apply to become part of a task force. Task forces aim for a maximum of 8 members, with a good representation of each stakeholder group. A high level of expertise on the task force topic is required.

Interested in joining a working group?

Please fill out [this form](#) to. If you are already member of one of the ISCO working groups, you do not need to register again. For any other questions or requests, please refer to the above defined contact persons. In case you cannot access the form, you can also reach out to the contact persons.

Timeline & Frequency

Each WG will convene two-three times a year and will be 2-3h long. Preparatory time for the consultation of tools and documents is required. Task forces can convene multiple times per year, depending on the assignment. The ISCOs will also organize one big learning conference which will take place in person and will cover several common challenges.

Date & Time* (CET)	Activity
February 9th 2pm-3.30pm	WG Forests & Agroforestry
February 21st 2pm-4.30pm	WG Monitoring & Evaluation
March 2nd 9.30am-12am	WG Traceability
March 31st 10am-12am	WG Child Labour
April 19th 1pm-3.30pm	WG Living Income
June 7th 10am-12am	WG Traceability
June 23rd 2pm-3.30pm	WG Forests & Agroforestry
July 5th 1pm-2.30pm	WG Living Income
July 7th 10am-12am	WG Child Labour
September 1st 9am-5pm	ISConference (learning event)
September 7th 2pm-4.30pm	WG Monitoring & Evaluation
October 6th 10am-12am	WG Traceability
October 24th 2pm-4pm	WG Forests & Agroforestry
November 3rd 10am-12am	WG Child labour
November 9th 2pm-4.30pm	WG Monitoring & Evaluation
November 10th 1pm-2.30pm	WG Living Income

*Please note these dates are subject to changes in case necessary for the functioning of the working group.