

# Tender: Mid-term Evaluation of the Initiative for Sustainable Landscapes (ISLA) program

## Questions related to the tender process

| No. | Section and page no. to which the question refers  | Quote of the text to which the question refers  | Question  | Answer   |
|-----|--|---|---|--|
| 1   | Section 2.2 General overview and context of the Program, page no.7<br>Research question R5, p.12 | To strengthen its landscape program, IDH is developing an online platform called SourceUp.<br><br>To what extent does SourceMap etc.. | Can you confirm that the subject of the evaluation is the ISLA program and that Sourcemap is the specific tool for which specifically research question R5 is applicable? | <p>The subject of the evaluation is the ISLA program, and SourceUp is part of it. It is a platform where landscape coalitions can profile their landscape program, showcase progress, and attract new partners. It is expected that the consultants will also evaluate SourceUp achievements so far, and additionally, will focus specifically on research question R5</p> <p>A specific ToC for SourceUp is being developed and will be made available to the consultants for the evaluation.</p> <p>Please note that this is about SourceUp and not Sourcemap. More information on SourceUp is available at: <a href="https://sourceup.org/">https://sourceup.org/</a></p> |



| No. | Section and page no. to which the question refers                   | Quote of the text to which the question refers  | Question   | Answer   |
|-----|---|---|--|--|
| 2   | Section 2.2 General overview and context of the Program, page no.10 | NB: It is important to note that most of the activities in the landscapes of West Kalimantan, Indonesia and Mato Grosso, Brazil, have been financially supported through the partnership program between IDH and The Norwegian Agency for Development Cooperation (NORAD) since 2016. | What does this mean for the scope of the evaluation? Are the NORAD landscapes in or out scope? Are there separate evaluation reports on these landscapes available?  | The NORAD landscapes (e.g. Liberia, Papua) are out of scope. However, some landscapes have been co-funded by both ISLA and NORAD (e.g. Mato Grosso, West Kalimantan), which means that achievements can't be attributed to ISLA only. We will not ask the consultants to do a granular assessment of which achievements can be attributed to ISLA vs NORAD.              |
| 3   | Section 3.1 Objectives of the assignment, page no.10/11             | Main objectives of the ISLA Program midterm evaluation are:...  | What is the relation between the key evaluation questions and the main objectives. Which of the two is leading in the evaluation? Our observation is that the objectives are much broader than covered by the questions p.11. what is leading? | The main objectives described page 10 are the overarching objectives of the evaluation. The questions page 11 are more specific questions that will contribute to the evaluation main objectives, and in particular to the following one:<br><br><i>Assessing the relevance, coherence, efficiency, effectiveness, expected impact and sustainability of the Program</i> |



| No. | Section and page no. to which the question refers   | Quote of the text to which the question refers  | Question   | Answer   |
|-----|---|---|--|--|
| 4   | <p>“ key learning questions” – p.10 and</p> <p>“ strategic learning questions” – p11</p> <p>Section 3.3 Key Evaluation Questions, page no. 11</p> | <p>Furthermore, it should address strategic learning questions to test assumptions built into the ToC(s).</p> | <p>Are these the same?</p> <p>The research questions differ in the level at which they are posed. Some are posed at IDH entity level while others are posed at program level. Is there room to propose adaptations to the questions?</p> | <p>Yes, these are the same (SL1, SL2, SL3)</p> <p>When we mention “IDH” in the evaluation questions, this is to be understood as “IDH Landscape program”.</p>  |
| 5   | <p>Section 3.3. Key Evaluation Questions, page no. 11</p>   | <p>Furthermore, it should address strategic learning questions to test assumptions built into the ToC(s).</p> | <p>Could you please confirm that in line with IOC criteria 4, the Evaluator will be provided with the most important assumptions in addition to the ToC(s)?</p>  | <p>The most important assumptions are those highlighted in the list of Key Evaluation Questions (Strategic Learning Questions, Relevance, Coherence, Effectiveness, Expected Impact, Sustainability) . We will refine these during the inception meeting with the consultants.</p> |



| No. | Section and page no. to which the question refers                 | Quote of the text to which the question refers   | Question  | Answer   |
|-----|---|--|---|--|
| 6   | Section 3.6 Approach and methodological requirements, page no. 16 | Field visits are not considered as necessary in the context of this mid-line evaluation. | How does IOB criteria 11 relate to this quote stating that field visits are not necessary? Is field level data already available? | <p>Field data is available through:</p> <ul style="list-style-type: none"> <li>- The project reports provided by implementing partners on a yearly basis</li> <li>- The Landscape Diagnostic Tool (which provides access to forest monitoring data, as well as satellite imagery corresponding to RADD alerts)</li> </ul> <p>We also do not believe that ground verification is needed at this stage, given that most field projects have just started.</p> <p>Field visits will be more relevant for the end-line evaluation.</p> <p>However, we welcome proposals that include travel budget, if needed in the context of the evaluation/recommended by the consultants.</p> |



| No. | Section and page no. to which the question refers                 | Quote of the text to which the question refers   | Question  | Answer  |
|-----|---|--|---|---|
| 7   | Section 3.6 Approach and methodological requirements, page no. 16 | <p>The data that will be available to the evaluator includes:...</p> <p>Independent evaluations from specific landscapes</p> | <p>For which landscapes will these evaluations be provided and at what phase/ over which period have these evaluations been conducted (mid-term, end-term, etc.)?</p> | <p>The nature, depth and advancement of the evaluations depend on the landscapes. Here's some information to date</p> <ul style="list-style-type: none"> <li>- Kenya: evaluation of the convening and the dairy project will be commissioned in Q2 2023, so part of the results should be available for the ISLA evaluation</li> <li>- Cote d'Ivoire: the baseline of a major field-level project will be commissioned in Q2 2023, so part of the results should be available for the ISLA evaluation</li> <li>- Cameroon: the baseline for the major field-level project will be commissioned in Q2 2023, but uncertain whether the results will be available (as the project is not contracted yet)</li> <li>- Vietnam: CIAT will carry out an independent assessment of achievements in one of the districts in the landscape (Krong Nang), but timeline for it is still TBC</li> <li>- Brazil: an impact study of the calves program is in the pipeline, but results are unlikely to be available on time for this mid-term review</li> </ul> |



| No. | Section and page no. to which the question refers                 | Quote of the text to which the question refers  | Question  | Answer   |
|-----|---|---|---|--|
| 8   | Section 3.6 Approach and methodological requirements, page no. 16 | The data that will be available to the evaluator includes:<br><br>Key performance indicator data from the ISLA results measurement framework. | Which KPI data (and over which period) will be available and at which level has this data been gathered/reported (i.e. at project level or aggregated level)? | KPIs from our Results Measurement Framework will be available for 2021 and 2022:<br><br><ul style="list-style-type: none"> <li>- At project level</li> <li>- At program level</li> </ul>   |
| 9   | Section 3.6 Approach and methodological requirements, page no. 16 | The data that will be available to the evaluator includes:<br><br>Key performance indicator data from the ISLA results measurement framework. | Would it be possible to receive the ISLA management framework?  | The Project KPI template can be downloaded from this link: <a href="https://we.tl/t-kO17G8D07a">https://we.tl/t-kO17G8D07a</a> (transfer link expires on 26.01.2023)<br><br>The IDH result measurement framework can be downloaded from this link: <a href="https://we.tl/t-M10VFuggPj">https://we.tl/t-M10VFuggPj</a> (transfer link expires on 26.01.2023) |
| 10  | Section 3.6 Approach and methodological requirements, page no. 17 | Value Monitor: Data from this tool will be available for some landscapes for the mid-term evaluation.   | For which landscapes will this data be available and over which period has this data been gathered?   | As of now, landscapes that are piloting this tool in Q1 2023 include:<br><br><ul style="list-style-type: none"> <li>- Malaysia</li> <li>- Vietnam</li> <li>- Cote d'Ivoire</li> <li>- Ethiopia</li> </ul> Once the pilots have been completed, the plan is to roll-out the questionnaire in all IDH landscapes in Q2 2023                                    |



| No. | Section and page no. to which the question refers | Quote of the text to which the question refers  | Question  | Answer  |
|-----|---|---|---|---|
| 11  | Section 3.7 Evaluation management, page no. 17    | Contribute to the identification of key stakeholders that need to be consulted/ interviewed during the evaluation | According to IOB criteria 14 the evaluator should be responsible for setting the criteria for determining whom to interview. How does this quote align with the IOB criteria? To what extent should the IOB criteria or RFP be leading? | This can be discussed during the inception meeting – but basically, we believe that the consultants will need IDH to provide them with the list of stakeholders that are part of the landscape coalition convened by IDH.   |
| 12  | Section 4 Applicant’s profile, page no. 19        | Demonstrated capacity to collect primary data...  | Can you confirm that this not includes field level data as per your RfP you mention that no field visits are expected (p.16)  | We need to have consultants with capacity to analyze field level data and a good understanding of the ways field level data is being collected.<br><br>On field visits: see answer to question 6  |
| 13  | Section 4 Applicant’s profile, page no. 19        | Capacity to operate in and understand the following languages: French, Portuguese, Vietnamese, Bahasa Indonesia.  | Can you confirm that this request refers to the capacity to conduct interviews and analyses of secondary data in these languages as field visits are not in scope (p.16)  | This refers to the capacity to conduct interviews and analysis of secondary data (note that some of the material is only available in local language – an option is of course to get these translated, although we think that consultants mastering the local language will offer a better alternative as they will also be able to carry out stakeholder interviews in French, Portuguese, Vietnamese, Bahasa) |



| No. | Section and page no. to which the question refers | Quote of the text to which the question refers  | Question  | Answer   |
|-----|---|---|---|--|
| 14  | Section 4 Applicant's profile, page no. 19        | Demonstrated experience in analysing and interpreting land-use data, making use of both local and global data sets.   | Can you confirm that this relates to the first bullet point on page no. 16 (land use and forest data)?  | This indeed refers to the analysis of land use and forest data.  |
| 15  | Section 7.2 References, page no. 23               | All reference client projects must have been finalized at least one year ago (2021 at the latest).  | What do you mean? It is common to set a period of max 3-5 years. Evaluation will take place 2023. We assume references concluded in 2020-2021 are valid | This is indeed what is meant here. An evaluation that would be still in the process of being carried out wouldn't qualify. |
| 16  | Section 8.1 Technical proposal, page no. 24       | The Applicant shall describe why the evaluation will collect qualitative and/or quantitative information in line with methods described in the evaluation matrix. | Does this refer to providing a motivation as to why either quantitative and/or qualitative methods have been used?                                      | It refers to a description of the methodology proposed, and its rationale.   |





| No. | Section and page no. to which the question refers | Quote of the text to which the question refers                              | Question  | Answer   |
|-----|---|---|---|--|
| 17  | Section 8.1 Technical proposal, page no. 24       | e.g. the household survey will be processed using SPSS version 28 or Stata. | Throughout the document reference is made to terms such as a household survey, soil data and data from small holder farmers and communities, yet it is stated that field visits are not necessary for this evaluation. Can you please explain this contradiction? | This is a standard sentence that we include in our M&E Terms of Reference. It is not meant to be prescriptive nor to specifically describe requirements for this ToR |
| 18  | Section 8.2 Financial Proposal, page no. 25       | Travel and transport expenses   | To which extent is it acceptable, taking into account that the evaluator is familiar with the local context and speaks the local language, that interviews are conducted remotely?  | See response to question #6 (we welcome proposals suggesting some field visits, if the consultants think they would still bring value to the evaluation.)            |



| No. | Section and page no. to which the question refers | Quote of the text to which the question refers  | Question   | Answer  |
|-----|---|---|--|---|
| 19  | Section 3.5 Evaluation Criteria, page no.15       | The evaluation will be reviewed against the 26 criteria.  | IOB criteria 3, 11 and 18 require a reference to baseline data. What data will be shared with the evaluator to serve as baseline data in this context? | See answer to questions #7&9 on data availability. A more granular presentation of available baseline data will be done during the inception meeting with the consultant.   |
| 20  | Section 3.5 Evaluation Criteria, page no.15       | The evaluation will be reviewed against the 26 criteria.  | At which level should effectiveness be measured (i.e. on IDH entity level/governance or on project level)?   | <p>It is expected to measure effectiveness of the ISLA program in the different countries (seven countries). The Program should be evaluated against the Program-level ToC and key evaluation questions, as well as provide country-level analyses and insights.</p> <p>It is not expected to measure effectiveness at the level of the IDH entity.</p> |
| 21  | Section 4, page 19                                | <p>Requirements on the general company profile therefore related to:</p> <ul style="list-style-type: none"> <li>- .....</li> <li>- Currency requirements for billing purposes.</li> </ul> | What do you mean by currency requirements for billing purposes? And do we need to provide a specific statement or legal document for this point?       | <p>The budget is to be presented in Euros, and we would expect invoices to be submitted in Euros. However, the consultancy would have to inform us if this was an issue.</p> <p>No legal document is required at this point in time.</p>  |



| No. | Section and page no. to which the question refers | Quote of the text to which the question refers  | Question  | Answer   |
|-----|---|---|---|--|
| 22  | Section 4, page 19                                | Demonstrated understanding of the social, political, economic, cultural, and historical context and dynamics of the countries where the program's operations take place (Kenya, Ethiopia, Cote d'Ivoire, Cameroon, Indonesia, Vietnam, Brazil). | Do you expect that all the team members presented have experience in some of the countries where the program's operations take place?   | We expect that at least one team member will have a demonstrated understanding of the country context and dynamics. Note that this is also linked to language requirements (see also answer to question #13)                                   |
| 23  | Section 3.4, page 14<br><br>Section 3.6, page 16  | Data collection tools draft ahead of field work<br><br>Field visits are not considered as necessary in the context of this mid-line evaluation  | On page 14, you mention field work, and, on page 16, you state that fields visits are not considered as necessary.<br><br>Don't you expect the team to collect in-country data? It seems difficult to collect data among the local communities, farmers and their organizations if not in person. | See answer to question #6 on field visits, and answer to questions #7, 8 & 9 on available field level data.<br><br>We welcome proposals suggesting some field visits, if the consultants think they would still bring value to the evaluation. |



| No. | Section and page no. to which the question refers                                 | Quote of the text to which the question refers  | Question  | Answer  |
|-----|---|---|---|---|
| 24  | <p>Section 3.4, page 14</p> <p>Section 3.6, page 16</p> <p>Section 4, page 19</p> | <p>Data collection tools draft ahead of field work</p> <p>Field visits are not considered as necessary in the context of this mid-line evaluation</p> <p>Capacity to operate in and understand the following languages: French, Portuguese, Vietnamese, Bahasa Indonesia</p>  | <p>If you expect field missions, in how many countries do you expect the team to collect in-country data? Have you already selected the countries for the field missions?</p> | <p>See answer to question #6 on field visits, and answer to questions #7, 8 &amp; 9 on available field level data.</p>  |
| 25  | <p>Section 3.6, page 17</p>   | <p>Value Monitor: qualitative survey tool given to members of the multi-stakeholder coalitions to understand the values the stakeholders gain from being members or the coalition. Data from this tool will be available for some landscapes for the mid-term evaluation.</p> | <p>Can more information on the Value Monitor Survey questions be provided? Is a survey expected from the evaluation team? To which stakeholders?</p>                          | <p>See below the link to the pilot questionnaire:</p> <p><a href="https://hva.eu.qualtrics.com/jfe/form/SV_3ElrobJemXk4umG">https://hva.eu.qualtrics.com/jfe/form/SV_3ElrobJemXk4umG</a></p> <p>This is for consultation only. Please do NOT test the survey (i.e. saving any answers) as this would then be recorded and would bias the results (this online survey is ongoing in Cote d'Ivoire)</p> |



| No. | Section and page no. to which the question refers | Quote of the text to which the question refers   | Question  | Answer  |
|-----|---|--|---|---|
| 26  | General question                                  | General question   | Is there updated information on the landscape level MTRs that will be available to the evaluation team? | See answer to questions #7, 8 and 9   |
| 27  | Section 4, page 19                                | Demonstrated experience in analyzing and interpreting land-use data, making use of both local and global data sets | Does the evaluation team need to include a GIS expert?  | <p>Not necessarily, as we will provide access to the platform we're using to monitor deforestation in our landscape. The platform is making WRI and EC JRC data available at landscape level, as well as other relevant national data (e.g. IMAGES in Cote d'Ivoire, Terra-I in Vietnam). It also provides satellite imagery corresponding to the deforestation alerts in the landscape, so that the images can be verified.</p> <p>The consultants will however need to be at least familiar with how satellite imagery functions (e.g. RADD alerts etc) and be able to analyze and interpret data.</p> <p>At the bottom of this document, we have also included snapshots of data available through the Landscape Diagnostic Tool (full access will only be provided to the selected consultancy)</p> |
| 28  | Section 3.3, page 11                              | The design of the mid-term evaluation should address key questions [...]. Furthermore, it should                   | At which stage will the assumptions built into the ToC be provided?                                     | The most important assumptions are those highlighted in the list of Key Evaluation Questions (Strategic Learning  |



| No. | Section and page no. to which the question refers | Quote of the text to which the question refers   | Question  | Answer   |
|-----|---|--|---|--|
|     |   | address strategic learning questions to test assumptions built into the ToC(s).  |   | Questions, Relevance, Coherence, Effectiveness, Expected Impact, Sustainability)   |
| 29  | 3.4, page 14<br><br>3.6, page 16                  | Deliverable 1: Updated workplan and timeline, including all activities required to produce the requested deliverables and information regarding fieldwork logistics<br><br>Field visits are not considered as necessary in the context of this mid-line evaluation | We find these two statements contradictory. We understand field work will be restricted to phone interviews, but no in-presence focus group discussions. Can you confirm this, or, otherwise, clarify requirements for field visits?    | By field visits we mean field visits for primary data collection. However, travel to the landscapes to carry out stakeholder interviews / focus group discussions can be scheduled.<br><br>See also answer to question #6  |
| 30  | Section 3.6, page 16                              | The data that will be made available to the evaluator includes: <ul style="list-style-type: none"> <li>Land use forest data from World Resource [...], hence limiting the need to acquire specific satellite-based data for this evaluation</li> </ul>             | <ol style="list-style-type: none"> <li>Will the provided land use maps be country specific (with local tree species and crops) and</li> <li>From which years will they be?</li> <li>Will country specific administrative and</li> </ol> | See answer to question #27.<br><br>At the bottom of this document, we have also included snapshots of data available through the Landscape Diagnostic Tool (full access will only be provided to the selected consultancy) |



| No. | Section and page no. to which the question refers | Quote of the text to which the question refers   | Question   | Answer  |
|-----|---|--|--|---|
|     |   |  | <p>cadaster datasets be made available?</p> <p>4. What kind of satellite imagery will be available on the forest monitoring platform provided by IDH and will it be within the evaluation time period (2021-2022)?</p> <p>5. Will the GIS and remote sensing data be available for download or will processing only be possible on the IDH platform?</p> |   |
| 31  | 3.3 page 11 and Annex A ToC                       | Furthermore, it should address strategic learning questions to test assumptions built into the ToC(s). | The ToC in Annex A does not mention underlying assumptions: Can you share these? In particular those that may hamper or facilitate achievements between the output and mid-term outcomes   | The most important assumptions are those highlighted in the list of Key Evaluation Questions (Strategic Learning Questions, Relevance, Coherence, Effectiveness, Expected Impact, Sustainability) |



| No. | Section and page no. to which the question refers   | Quote of the text to which the question refers  | Question  | Answer   |
|-----|---|---|---|--|
| 32  | 3.6 Page 16   | Field visits are not considered as necessary in the context of this mid-line evaluation.  | <p>What do you mean by field visits? in relation to specific jurisdiction levels, in relation to target beneficiaries, MSCs, etc?</p> <p>Does it imply that you expect the interviews/ FGDs to concentrate on stakeholders that can be reached online or in the respective capital cities of country or region?</p>   | <p>By field visits we mean field visits for primary data collection. However, travel to the landscapes to carry out stakeholder interviews / focus group discussions can be scheduled.</p> <p>See also answer to question #6</p>   |
| 33  | <p>3.2 Page 11</p> <p>In combination with section 4, page 19 (required competences and expertise)</p> | <p>The scope of the evaluation includes countries and regions outlined in Table 2 (Kenya, Cameroon, Cote d'Ivoire, Indonesia, Vietnam, Brazil, Ethiopia).</p> <p>5) Capacity to operate in and understand the following languages: French, Portuguese, Vietnamese, Bahasa Indonesia</p> | <p>Does this mean that IDH expects the evaluation team to collect landscape-specific primary and secondary data (documents, interviews, FGDs, etc) in each of the seven countries of operation? Or would it be acceptable to propose an evaluation design that combines a portfolio evaluation (7 countries) based on secondary data with a limited number of</p> | <p>It would be acceptable to propose an evaluation design that combines a portfolio evaluation (7 countries) based on secondary data (documents, interviews, FGDs, etc) with a limited number of country/coalition cases where primary information is gathered, when critical gaps have been identified.</p> <p>Please also see answers to previous questions above on information already available for each landscape.</p> |





| No. | Section and page no. to which the question refers | Quote of the text to which the question refers   | Question  | Answer   |
|-----|---|--|---|--|
|     |   |  | country/coalition cases where primary information is gathered?  |  |
| 34  | 3.2 Page 11                                       | The scope of the evaluation includes countries and regions outlined in Table 2.                                | Two regions are listed for Indonesia – West Kalimantan and Aceh, while in Aceh region, new strategy is being implemented in 2023. What should the midterm evaluation inform about the program in Aceh since new strategy had been developed and rolling out?<br>Same question about the projects in Côte d’Ivoire, which are still in (pre)contracting phase. | We realize that there was a mistake in the description of the landscape to be evaluated. <b>The Aceh landscape is not receiving ISLA funding and will not be included in the scope of the evaluation.</b><br>Regarding Cote d’Ivoire: the evaluation will focus on landscape convening activities and ongoing field level project (3 projects have been contracted, but they are at different stages of implementation).<br>Please note that in all landscapes, multistakeholder coalitions are being convened and field projects are being implemented (although they are all at different stages of implementation, i.e. some field level projects are just kick starting, while some have been ongoing for 1-2 years) |
| 35  | 3.4 Page 14 Deliverable 2                         | Raw data (databases of survey responses, datasets used for data processing, transcripts of interviews or FGD). | To comply with general principles of research integrity, surveys, interviews and FGDs usually take place in a confidential environment to ensure that participants can speak freely. This implies   | Raw data may be helpful to:<br><ul style="list-style-type: none"> <li>- Better understand the context of some statements</li> <li>- Verify the quality of the data / information collected</li> </ul> We have taken note of the fact that the data may have to be anonymized to ensure confidentiality.  |



| No. | Section and page no. to which the question refers      | Quote of the text to which the question refers   | Question  | Answer   |
|-----|--|--|---|--|
|     |  |  | that researchers are not at liberty to share transcripts or interview notes, unless these are fully anonymized. Can you explain what exactly is meant by including raw data, taking into account confidentiality?   |  |
| 36  | Section 3.4 , Page 14, Deliverable 2                   | Data analysis records and rating system.   | What exactly is meant with this?  | This relates to the way data is being collected, analyzed and evaluated  |
| 37  | 8. Documents to be submitted with the Proposal, pg. 23 | The following documents and information must be submitted by the Applicant, handled in the indicated sequence and numbering. | Do the requested documents – technical proposal, financial proposal and supporting documents need to be submitted as separate documents or be compiled in one document complying with the order indicated in the ToR (i.e. financial proposal and supporting documents in annexes). | For clarity, it is preferred if they are submitted as separate documents (i.e. 1. Technical proposal, 2. Financial proposal, 3 supporting documents), as it makes the review of completeness of the proposal a bit easier. |
| 38  | Section 8.1, Page 25, team composition                 |  | Is it correct that no CVs are required?   | CVs are not specifically required per se, but please note that we ask specific questions on the team composition   |



| No. | Section and page no. to which the question refers | Quote of the text to which the question refers  | Question   | Answer  |
|-----|---|---|--|---|
|     |   |   |  | <p>and experience/expertise, which is often included into CVs.</p> <p>See page 25:</p> <p><i>Team composition: Clear description of the Applicant's team, relevant experience of team members, task and time allocated per team member. For this section, please describe:</i></p> <ul style="list-style-type: none"> <li>- <i>their experience in results-based management, in conducting evaluations or any other research activities;</i></li> <li>- <i>their technical and language skills;</i></li> <li>- <i>their role in the evaluation team, the main tasks they will execute and the time they are expected to be involved.</i></li> </ul> |
| 39  | Section 3.6 p. 16                                 | <p>"Land use and forest data from World Resource Institute's Global Forest Watch, the European Commission Joint Research Center and country specific datasets will be made available through a forest monitoring platform</p> | <p>In what kind of format are the satellite-based data presented? (e.g. maps, statistics, graphs, etc.).</p> | <p>See an overview of the Landscape Diagnostic Tool at the bottom of this document.</p> <p>See also answer to question #27</p>  |



| No. | Section and page no. to which the question refers | Quote of the text to which the question refers   | Question   | Answer   |
|-----|---|--|--|--|
|     |   | developed for all IDH landscapes, which can be used to analyse impact on forests. The platform also allows access to satellite Imagery for the hotspots identified, hence limiting the need to acquire specific satellite based data for this evaluation.” |  |  |
| 40  | Section 3.6 p. 16                                 | “The platform also allows access to satellite Imagery for the hotspots identified, hence limiting the need to acquire specific satellite based data for this evaluation”   | Are the satellite-based data available for each IDH landscape? | Yes  |
| 41  | Section 3.6 p. 16                                 | “The platform also allows access to satellite Imagery for the hotspots identified, hence limiting the need to acquire specific satellite based data for this evaluation”   | Are the satellite-based data available over time?              | See an overview of the Landscape Diagnostic Tool at the bottom of this document. |



| No. | Section and page no. to which the question refers    | Quote of the text to which the question refers  | Question  | Answer   |
|-----|--|---|---|--|
| 42  | Section 3.6 p. 16                                    | “Land use and forest data from World Resource Institute’s Global Forest Watch, the European Commission Joint Research Center and country specific datasets will be made available through a forest monitoring platform developed for all IDH landscapes, which can be used to analyse impact on forests.” | Does it include climate change variables (e.g. precipitation, land surface temperature, etc.) for the different countries and IDH landscapes? | No, it doesn’t include detailed climate change variables for the different countries and landscapes. |
| 43  | Section 3.4 p. 14-15                                 | “Deliverable 4: Half a day learning session with key stakeholders including: power point presentation of key findings, conclusions, recommendations and other lessons learned of the evaluations”   | Will this final workshop be held in person or remotely?   | This will be done remotely, given that stakeholders are based in different countries.                |
| 44  | Section 6.5 p. 22 and section 8.1 technical proposal | “Proposals should not exceed 20 pages (excl. annexes)”  | Do the max 20 pages include only the technical approach (point 2 section 8.1) or the overall technical proposal                               | The 20 pages relate to the Technical Proposal.<br><br>See also answer to question #37                |



| No. | Section and page no. to which the question refers | Quote of the text to which the question refers | Question   | Answer |
|-----|---|--|--|--------|
|     |   |  | including also consultant background & profile, workplan, QA and interaction with IDH? |        |



## ADDITIONAL INFORMATION ON THE LANDSCAPE DIAGNOSTIC TOOL

### 1. Summary Statistics

Quick Scan Results

Background | Basic | Satellite | Light | OpenStreetMap | Landcover

**Step 1. Choose a level of spatial analysis:**

- Entire Landscape
- Grid Overlay
- Protected Areas
- Custom Areas of Interest
- Admin (Level 0)
- Admin (Level 1)
- Admin (Level 2)
- Admin (Level 3)

**Step 2. Select indicators to explore from the list below: ?**

- A. Land Cover (ESA WorldCover)
- B. Tree Cover Loss (GFW)
- C. Primary Forest Remaining (GFW)
- D. Tropical Moist Forest Degradation and Deforestation (EC/JRC)
- E. Cropland Expansion (GLAD)
- F. Forest Carbon Fluxes (GFW)
- G. Burned Area (Copernicus GLS)

| Full Landscape                                | 2019  | 2020    | 2021   |
|---|-------|---------|--------|
| <b>A. Land Cover (ESA WorldCover)</b>         |       |         |        |
| Total size of the area [ha]                   | -     | 1127030 | -      |
| - forest [%]                                  | -     | 88.8%   | -      |
| - shrubland [%]                               | -     | 6.2%    | -      |
| - grassland [%]                               | -     | 3.4%    | -      |
| - cropland [%]                                | -     | 0.0%    | -      |
| - built up [%]                                | -     | 0.4%    | -      |
| - water [%]                                   | -     | 0.6%    | -      |
| - others [%]                                  | -     | 0.6%    | -      |
| <b>B. Tree Cover Loss (GFW)</b>               |       |         |        |
| Tree cover loss, total per year [ha]          | 28616 | 25344   | 16526  |
| - within primary forest areas [ha]            | 3415  | 5095    | 1599   |
| - within primary forest areas [%]             | 11.9% | 20.1%   | 9.7%   |
| <b>C. Primary Forest Remaining (GFW)</b>      |       |         |        |
| Primary forest remaining, total area [ha]     | -     | -       | 331166 |
| - area change since 2000 [ha]                 | -     | -       | -83602 |
| - percentage change since 2000 [%]            | -     | -       | -20.2% |
| <b>D. Tropical Moist Forest Data (EC/JRC)</b> |       |         |        |
| Undisturbed tropical moist forest [ha]        | -     | 336298  | -      |
| Degraded tropical moist forest [ha]           | -     | 15306   | -      |
| Deforested tropical moist forest [ha]         | -     | 543     | -      |
| <b>E. Cropland Expansion (GLAD)</b>           |       |         |        |

Tip: Click one of the indicators in the table to sort the results and show values in the map.

Map: Geofolio Landscape Reports. Data: GFW/JRC. Backgrounds: Mapbox/Openstreetmap [13] Contributors/ESA WorldCover.

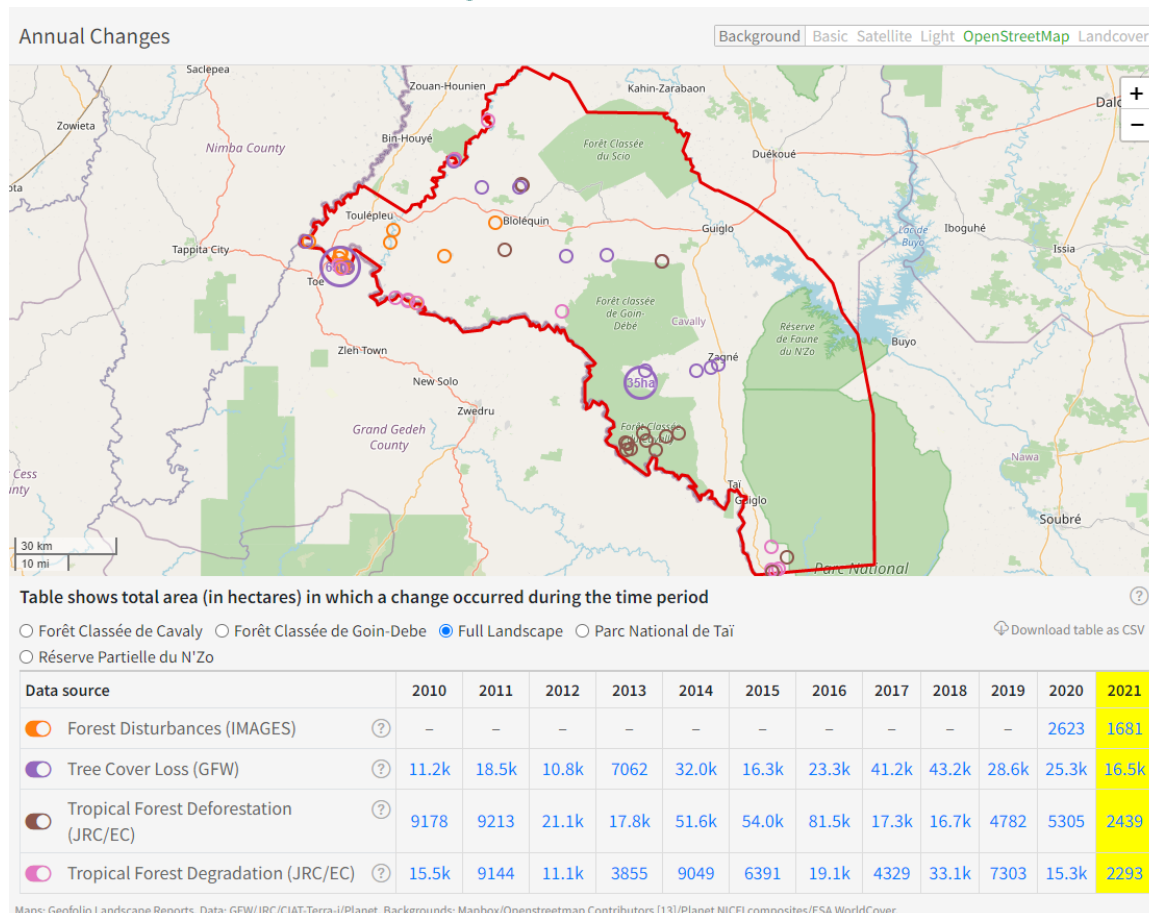


## 2. Annual Changes

Use this map to see the hotspots where your landscape has changed the most in one year.

To see the hotspots for a specific year, click on the data in the column for that year. For each dataset only the top 25 hotspots larger than 1 hectare appear on the map. The table under the map shows the total area of alerts, including those smaller than 1 hectare.

Click a hotspot on the map to compare satellite images from before and after the change. Try selecting different time periods to get the best view of how the area has changed.







When clicking on a hotspot, satellite images are made available for the specific hotspot. Note that not all satellite imagery will be explicit about what happened on the ground. (the image below corresponds to land use change for rubber plantation, in an area where the Ivorian government allocated a concession to the rubber industry)

Annual Changes → Details Close

|   |   |  |
|---|---|--|
| <p>Planet visual mosaic Dec 2020</p> <ul style="list-style-type: none"><li><input checked="" type="radio"/> Show satellite layer selected from the list below</li><li><input type="radio"/> Show reference map from OpenStreetMap</li><li><input type="radio"/> Show reference hi-res image from unknown date</li></ul> <p>Images before 2021-01-01</p> | <p>Planet visual mosaic Dec 2022</p> <p>Images after 2021-01-01</p> | <p>More insights about this location</p> <p>This change in the landscape was detected during 2021 in the <b>Tree Cover Loss</b> data by Global Forest Watch. It has a size of 35ha and is centered at longitude -7.6996 and latitude 6.1422.</p> <ul style="list-style-type: none"><li>+ Administrative divisions ⓘ</li><li>Loading, please wait...</li><li>+ Protected areas ⓘ</li><li>+ Forest insights ⓘ</li><li>+ Custom data analysis ⓘ</li></ul> |
|---|---|--|

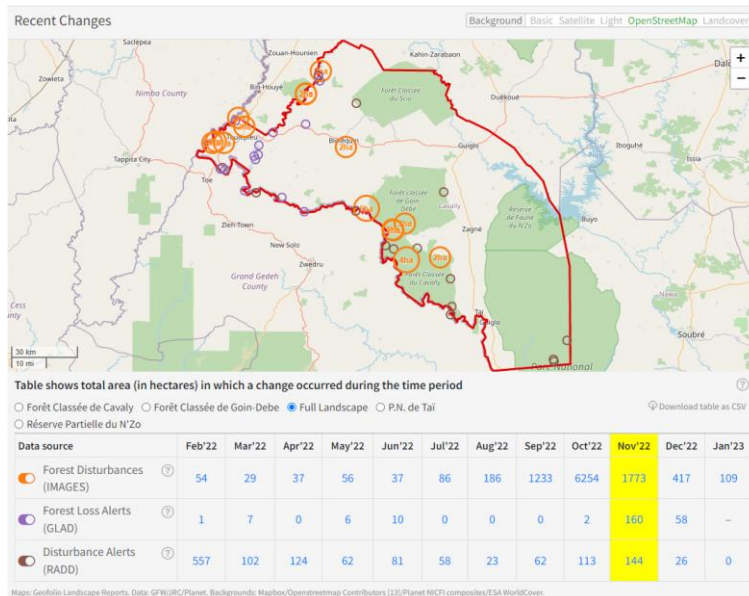
### 3. Recent Changes

Use this map to see the hotspots where your landscape has changed the most during the past 12 months.

To see the hotspots for a specific month, click on the data in the column for that month. For each dataset only the top 25 hotspots larger than 1 hectare appear on the map. The table under the map shows the total area of alerts, including those smaller than 1 hectare.

Select a hotspot on the map to compare satellite images from before and after the change. Try selecting different time periods to get the best view of how the area has changed.

The map shows all datasets that are available monthly in this region. The current month may not always be complete, and can still be updated throughout the month.



When clicking on a hotspot, satellite images are made available for the specific hotspot. Note that not all satellite imagery will be explicit about what happened on the ground.

