



**Together,
transforming
markets**

people

planet

progress

**We believe markets have the power to make
trade more inclusive and sustainable.**





The power of markets

200 multinational companies engage in half of the world's production and trade of **15** key commodities.

Small and Medium Enterprises represent about **90%** of businesses and more than **50%** of employment worldwide.

1.5 billion

Primary producers/
extractors

Value chain

- Brands
- Retailers
- Finance
- Processors
- Traders
- Manufacturers

7 billion

Consumers

A low-angle, upward-looking photograph of several modern skyscrapers with glass facades. The buildings are dark, and many windows are illuminated with warm yellow light, suggesting dusk or dawn. The sky is a pale, overcast blue. The perspective creates a sense of height and scale.

But markets are mainly driven by the pursuit of efficiency and short-term profit maximization without concern for people and planet.



Biodiversity

1970 - 2018

(The Global Living Planet Index)



+147%

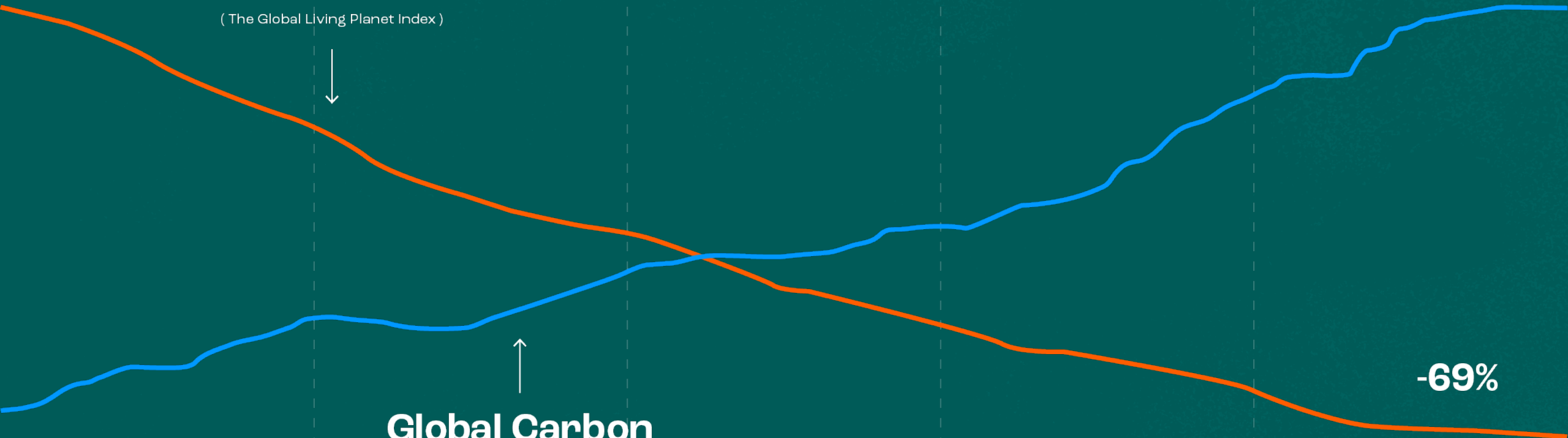
Global Carbon Emissions

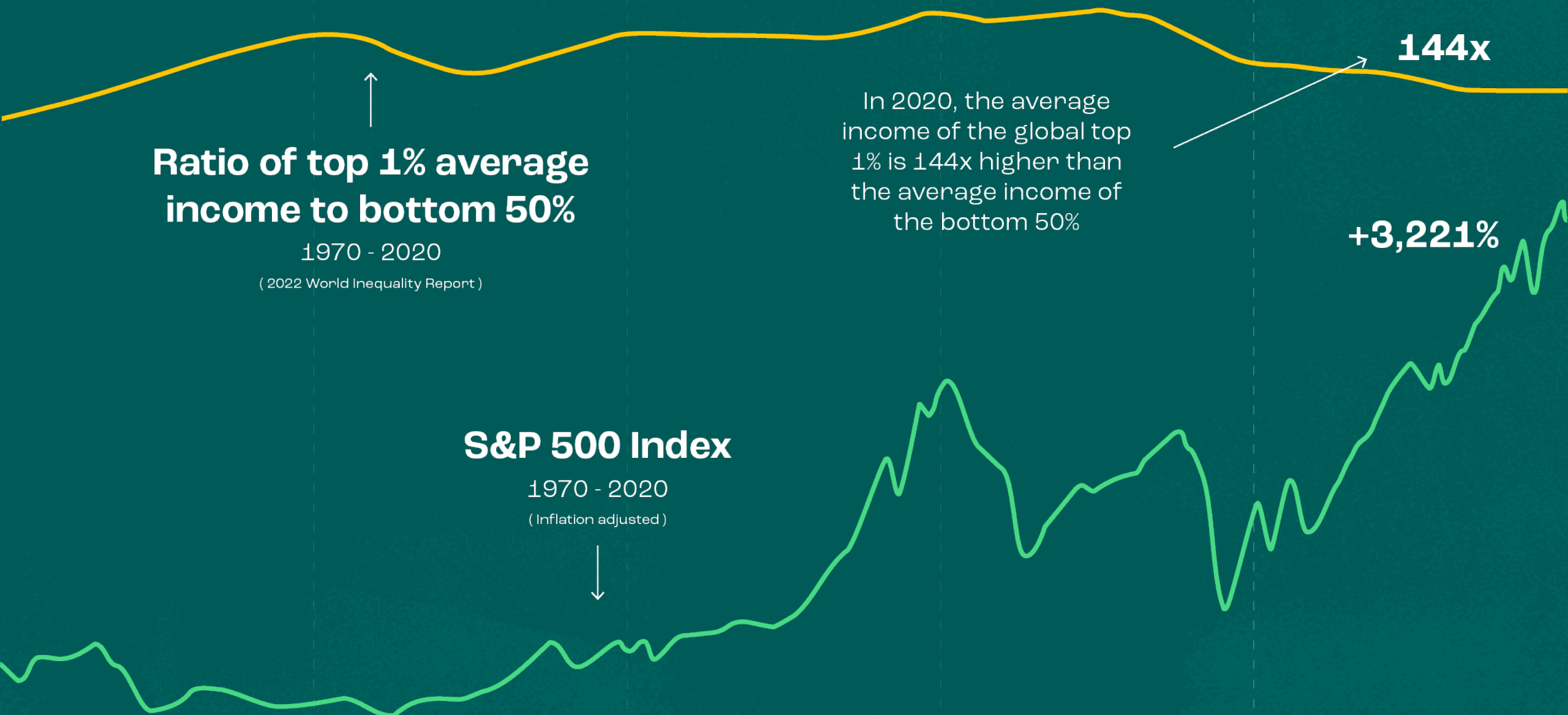
1970 - 2018

(Our World in Data)



-69%



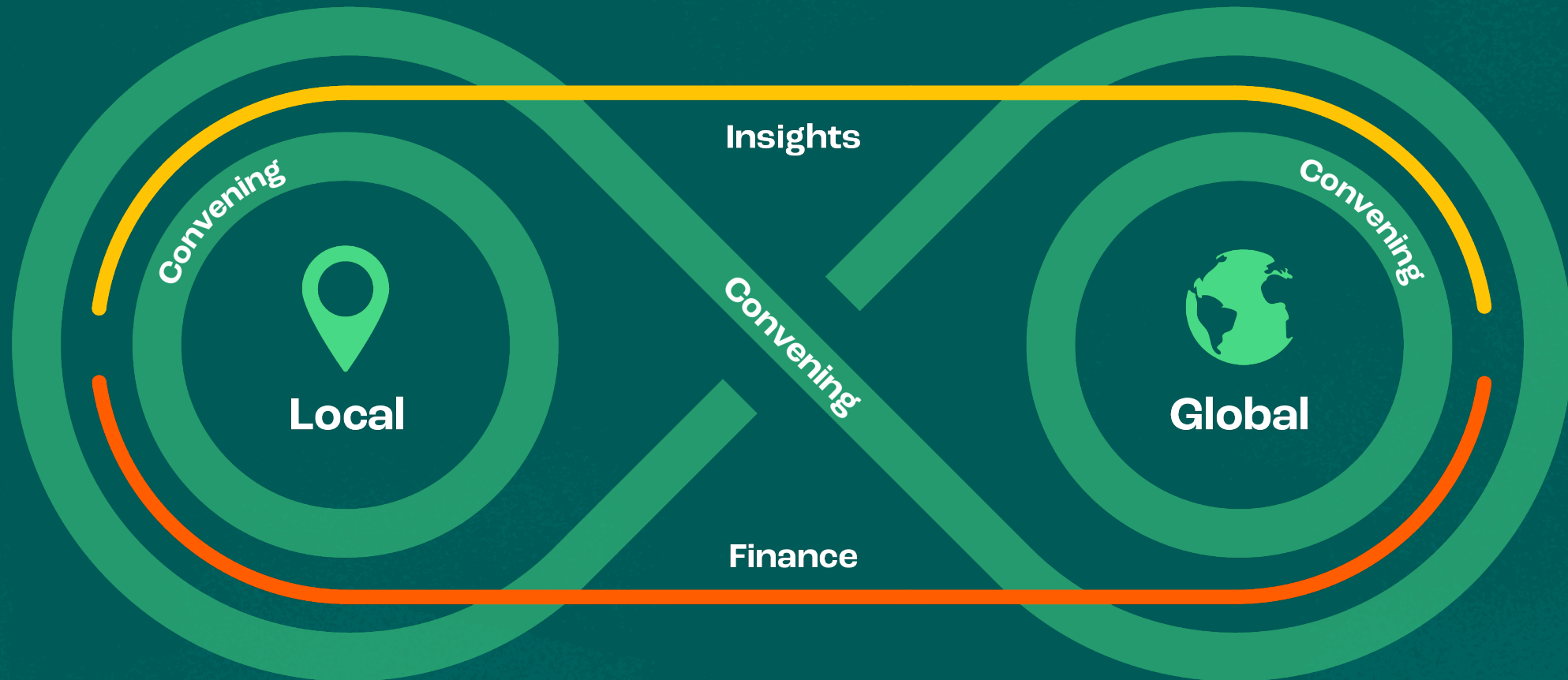


A photograph of four farmers working in a field. One farmer in a straw hat and blue pants stands in the background, holding a white bag. Another farmer in a grey shirt and yellow pants is bent over on the left. In the foreground, two farmers wearing straw hats, one in an orange jumpsuit and one in a green jumpsuit, are crouching and working with plants. The field is filled with green plants, and the background shows a forested hillside.

That's why IDH is making conscious interventions to shift the private sector focus towards the long term for public good.



IDH transforms international markets and local practices through convening, co-creating and co-investing.





Facilitated by our network of near 400 staff of conveners and experts embed in key markets and value chains.

50 nationalities with networks of key private and public key decision makers at Minister and C-suite level.




A high-angle, top-down photograph of a diverse group of people standing in a circle, with their hands stacked on top of each other in the center. The group includes individuals of various ethnicities and ages. One person on the left wears a vibrant, multi-colored headscarf. The background is a plain, light-colored floor. The overall mood is one of unity and teamwork.

**Bringing diverse people together to
collaborate and build resilient partnerships.**



**IDH creates agency
for people working
in value chains to
choose what's right,
not what's easy.**



A man with a beard, wearing a dark cap and jacket, is seen from the side, holding a white drone controller with a tablet attached. A small drone is flying in the sky above a green field. The text "Innovating where the commercial solution is not yet visible." is overlaid in the center.

**Innovating where the commercial
solution is not yet visible.**

idh solutions

**IDH embeds
transformative
solutions into
business as usual.**



Carbon advisory



Service delivery



Sustainable
sourcing



Business
incubation hub

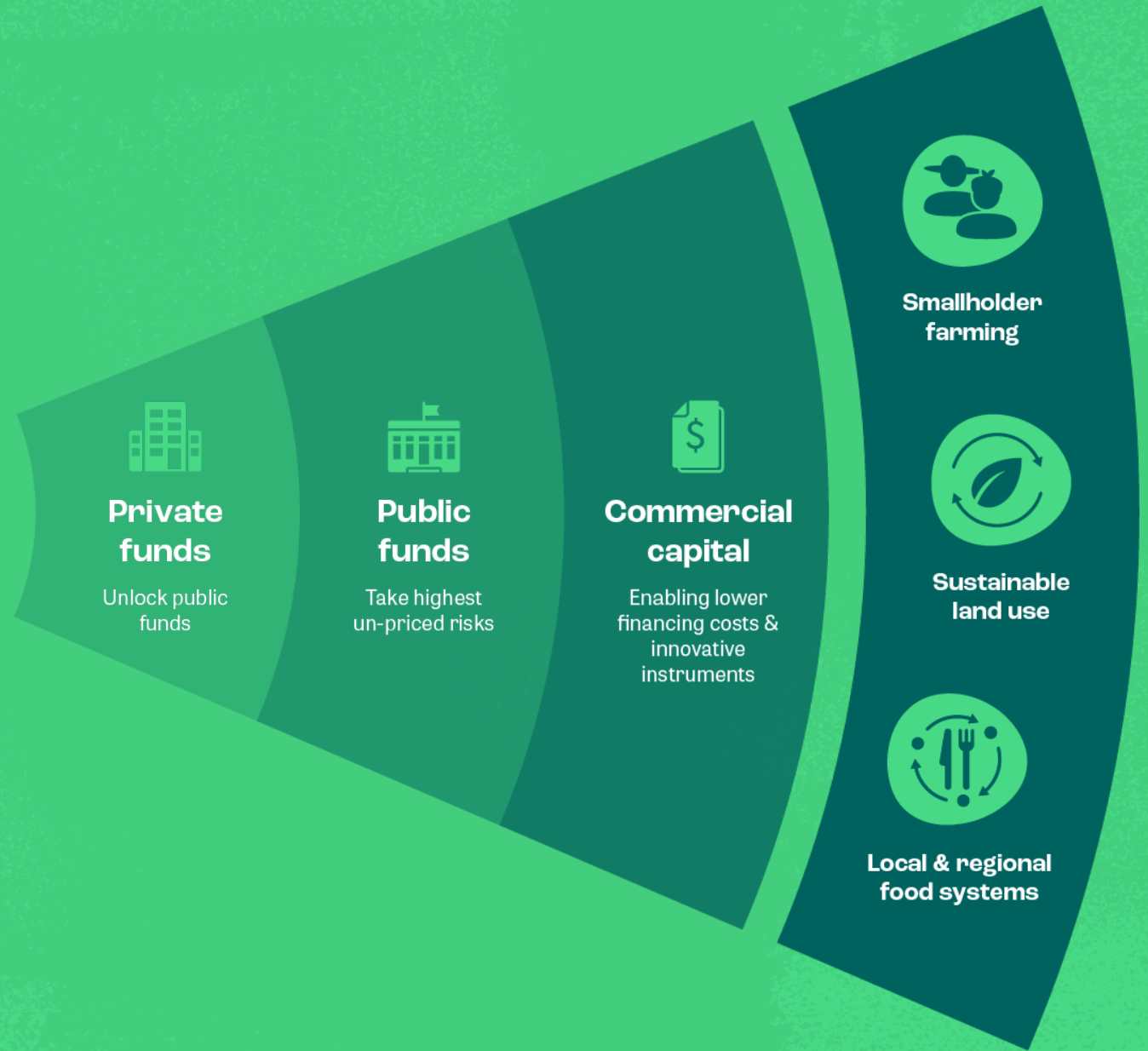
An aerial photograph of a lush green terraced tea plantation. The terraces are arranged in a series of parallel, slightly curved rows that follow the contours of the land. A narrow, light-brown dirt path runs vertically through the center of the image, separating the terraces. The overall scene is vibrant and shows a well-maintained agricultural landscape.

**Catalyzing commercial capital in sustainable
investment opportunities.**



idh
invest

**IDH proves that
investing for
financial return
and development
impact works.**



A photograph of a diverse group of people, including a woman with a tattoo and a smiling Black woman, with their arms raised in a circle. The image is framed by a thick green circular border.

Will you join us?